

Traffic Safety Facts

2007 Data

Older Population

“In 2007, older people accounted for 14 percent of all traffic fatalities and 19 percent of all pedestrian fatalities.”

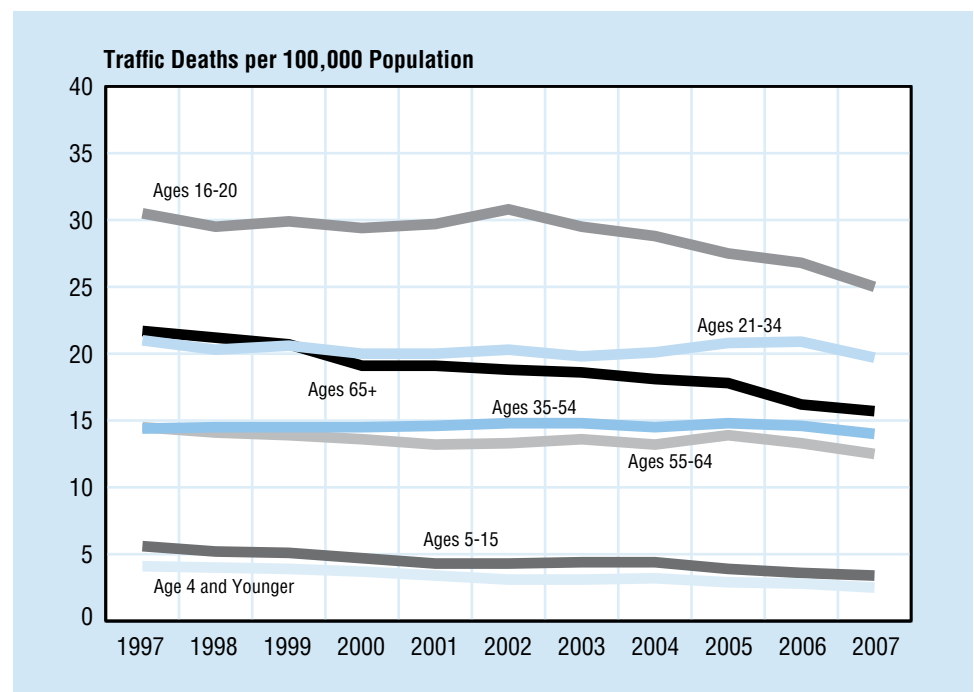
This fact sheet focuses on the older population in the United States which includes all people age 65 and older. In 2007, 13 percent of the total U.S. resident population (38 million) were people age 65 and older.

There were 30 million older licensed drivers in 2006 — an 18-percent increase from 1996. In contrast, the total number of licensed drivers increased by only 13 percent from 1996 to 2006. Older drivers made up 15 percent of all licensed drivers in 2006, compared with 14 percent in 1996.

In 2007, 196,000 older individuals were injured in traffic crashes, accounting for 8 percent of all the people injured in traffic crashes during the year. These older individuals made up 14 percent of all traffic fatalities, 14 percent of all vehicle occupant fatalities, and 19 percent of all pedestrian fatalities.

Most traffic fatalities involving older drivers in 2007 occurred during the daytime (79%), occurred on weekdays (72%), and involved other vehicles 71%.

Figure 1
Motor Vehicle Traffic Fatality Rates by Age Group, 1997-2007



Of all adult drivers, older drivers involved in fatal crashes had the lowest proportion of total drivers with blood alcohol concentration (BAC) of .08 grams per deciliter (g/dL) or higher. Among all fatally injured adult pedestrians, older pedestrians also had the lowest proportion of total pedestrians with BAC of .08 g/dL or higher.

Table 1
Age and Alcohol, 2007

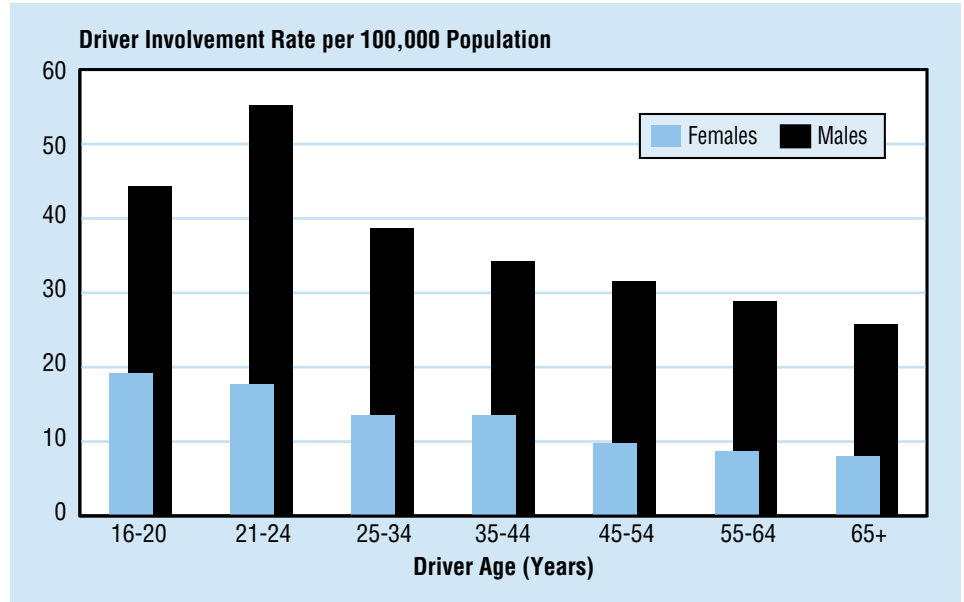
Age Group (Years)	Drivers Involved in Fatal Crashes			Pedestrian Fatalities		
	Total	BAC ≥ .08 g/dL		Total	BAC ≥ .08 g/dL	
		Number	Percent of Total		Number	Percent of Total
<16	239	28	12	354	12	3
16-20	6,851	1,205	18	287	75	26
21-34	16,948	5,278	31	902	458	51
35-54	18,844	4,247	23	1,670	801	48
55-64	6,011	734	12	494	150	30
65+	5,880	344	6	903	100	11
Total	*55,681	12,068	22	**4,654	1,618	35

*Includes 908 drivers of unknown age.

**Includes 44 pedestrian fatalities of unknown age.

“Older drivers involved in fatal crashes in 2007 had the lowest proportion of intoxication of all adult drivers.”

Figure 2
Driver Involvement Rates in Fatal Crashes by Age and Sex, 2007



Over three-fourths (77%) of all older occupants of passenger vehicles involved in fatal crashes were using restraints at the time of the crash, compared to 63 percent for other adult occupants (18 to 64 years old).

For older people, 60 percent of pedestrian fatalities in 2007 occurred at non-intersection locations. For other pedestrians, 81 percent of fatalities occurred at non-intersection locations. In two-vehicle fatal crashes involving an older driver and a younger driver, the vehicle driven by the older person was nearly twice as likely to be the one that was struck (59% and 33%, respectively). In 46 percent of these crashes, both vehicles were proceeding straight at the time of the collision. In 25 percent, the older driver was turning left — 5 times more often than the younger driver.

“In two-vehicle fatal crashes with an older and a younger driver, the older driver’s vehicle was nearly twice as likely to be the one that was struck.”

Table 2
Involvement of the Older Population in Traffic Fatalities, 1997 and 2007

	1997			2007			Percentage Change, 1997-2007		
	Total	Age 65+	Percentage of Total	Total	Age 65+	Percentage of Total	Total	Age 65+	Percentage Age 65+
Population (thousands)									
Total	267,784	34,185	12.8	301,621	37,888	12.6	13	11	-1.6
Male	130,783	14,061	10.8	148,659	15,976	10.7	14	14	-0.0
Female	137,001	20,125	14.7	152,962	21,912	14.3	12	9	-2.5
Drivers Involved in Fatal Crashes									
Total	56,688	6,715	11.8	55,681	5,880	10.6	-2	-12	-10.9
Male	40,954	4,547	11.1	40,804	4,119	10.1	0	-9	-9.1
Female	14,954	2,168	14.5	14,099	1,761	12.5	-6	-19	-13.8
Driver Fatalities									
Total	24,667	4,327	17.5	26,480	3,656	13.8	7	-16	-21.3
Male	17,879	2,846	15.9	20,384	2,553	12.5	14	-10	-21.3
Female	6,783	1,481	21.8	6,092	1,103	18.1	-10	-26	-17.1
Total Traffic Fatalities									
Total	42,013	7,408	17.6	41,059	5,932	14.4	-2	-20	-18.1
Male	27,827	4,124	14.8	29,039	3,585	12.3	4	-13	-16.7
Female	14,168	3,284	23.2	12,011	2,347	19.5	-15	-29	-15.7
Occupant Fatalities									
Total	35,725	6,139	17.2	35,555	4,922	13.8	0	-20	-19.4
Male	23,369	3,330	14.2	25,067	2,942	11.7	7	-12	-17.6
Female	12,339	2,809	22.8	10,479	1,980	18.9	-15	-30	-17.0
Pedestrian Fatalities									
Total	5,321	1,174	22.1	4,654	903	19.4	-13	-23	-12.1
Male	3,643	715	19.6	3,259	554	17.0	-11	-23	-13.4
Female	1,677	459	27.4	1,395	349	25.0	-17	-24	-8.6

Older Population Age Groups

The following table and graphs provide data for subgroups of the older population: 65-69, 70-74, 75-79, 80-84, and 85+ years.

Table 3
Driver Involvement in Fatal Crashes and Pedestrian Fatalities in the Older Population by Age Group, 2007

	65-69	70-74	75-79	80-84	85+	Total
Drivers Involved in Fatal Crashes	1,683	1,342	1,228	912	715	5,880
Pedestrian Fatalities	182	200	192	195	134	903

Figure 3
Motor Vehicle Traffic Fatality Rates in the Older Population by Age Group, 1997-2007

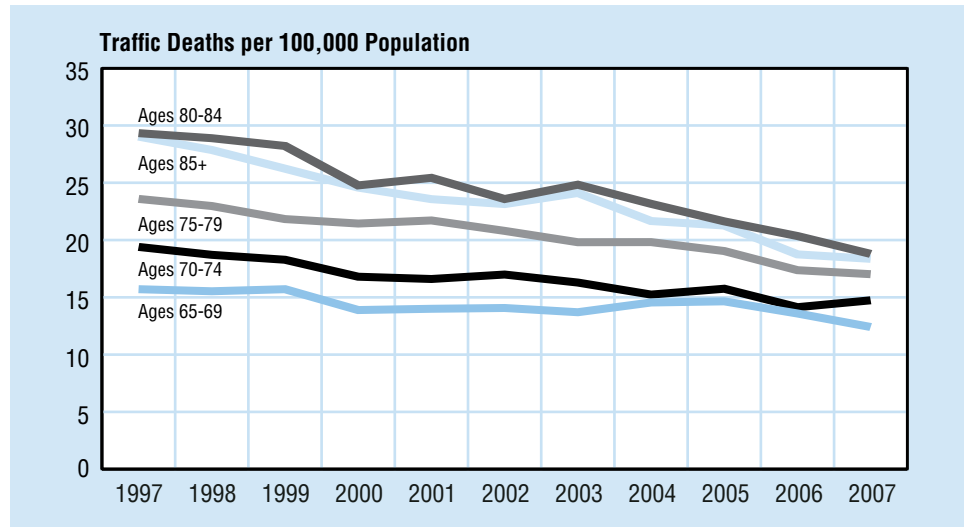
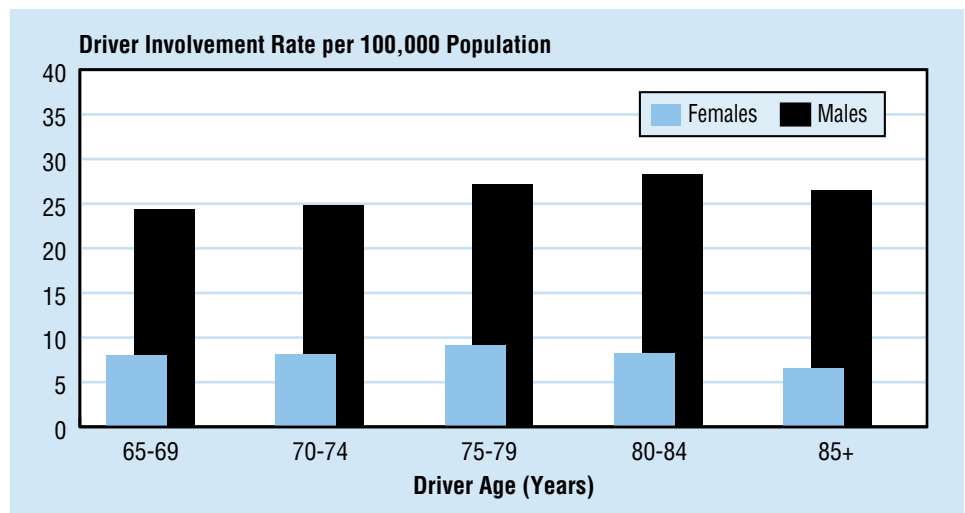


Figure 4
Involvement Rates for Older Drivers in Fatal Crashes by Age Group and Sex, 2007



For more information:

Information on traffic fatalities is available from the National Center for Statistics and Analysis, NVS-424, 1200 New Jersey Avenue SE., Washington, DC 20590. NCSA can be contacted at 800-934-8517. Fax messages should be sent to 202-366-7078. General information on highway traffic safety can be accessed by Internet users at www.nhtsa.gov/portal/site/nhtsa/nhsa. To report a safety-related problem or to inquire about motor vehicle safety information, contact the Vehicle Safety Hotline at 888-327-4236.

Other fact sheets available from the National Center for Statistics and Analysis are *Overview, Alcohol, African American, Bicyclists and Other Cyclists (formerly titled Pedalcyclists), Children, Hispanic, Large Trucks, Motorcycles, Occupant Protection, Pedestrians, Race and Ethnicity, Rural/Urban Comparisons, School Transportation-Related Crashes, Speeding, State Alcohol Estimates, State Traffic Data, and Young Drivers*. Detailed data on motor vehicle traffic crashes are published annually in *Traffic Safety Facts: A Compilation of Motor Vehicle Crash Data from the Fatality Analysis Reporting System and the General Estimates System*. The fact sheets and annual Traffic Safety Facts report can be accessed online at www-nrd.nhtsa.dot.gov/CATS.

Table 4

Driver Involvement in Fatal Traffic Crashes by State and Age Group, 2007

State	Total	Total 65+	Percentage of Total	Age Group (Years)								
				<16	16-20	21-34	35-54	55-69	70-74	75-79	80-84	85+
Alabama	1,470	143	9.7	9	185	459	504	202	41	29	14	12
Alaska	117	5	4.3	0	21	30	43	18	3	0	1	0
Arizona	1,421	143	10.1	8	171	466	445	181	32	32	19	18
Arkansas	858	86	10.0	5	115	226	305	141	18	18	11	12
California	5,465	466	8.5	14	594	1,822	1,883	662	108	83	62	71
Colorado	789	79	10.0	5	82	255	267	122	22	12	5	13
Connecticut	378	47	12.4	0	51	108	132	50	8	8	13	6
Delaware	159	12	7.5	0	18	42	61	27	4	0	1	3
District of Columbia	48	4	8.3	1	6	15	18	3	2	1	0	0
Florida	4,551	503	11.1	12	571	1,396	1,465	598	120	100	89	65
Georgia	2,296	217	9.5	8	276	743	770	321	52	41	38	20
Hawaii	171	16	9.4	3	18	60	54	22	2	4	4	0
Idaho	289	42	14.5	6	36	95	84	36	9	6	8	7
Illinois	1,710	187	10.9	3	250	495	566	225	40	40	28	24
Indiana	1,238	149	12.0	4	153	334	444	193	36	35	21	11
Iowa	577	83	14.4	11	75	150	197	76	8	20	21	17
Kansas	622	65	10.5	6	82	169	221	97	17	12	11	7
Kentucky	1,187	140	11.8	5	133	328	437	186	27	33	19	15
Louisiana	1,295	92	7.1	7	171	452	433	154	28	17	8	7
Maine	232	34	14.7	0	26	64	81	37	5	7	6	6
Maryland	848	70	8.3	3	99	276	308	96	23	9	10	6
Massachusetts	551	64	11.6	0	77	166	192	60	17	15	8	9
Michigan	1,536	191	12.4	9	203	433	481	228	42	49	37	25
Minnesota	781	100	12.8	2	83	237	263	116	32	18	15	12
Mississippi	1,117	108	9.7	13	141	334	383	158	25	23	16	15
Missouri	1,325	162	12.2	8	165	340	479	190	34	34	29	25
Montana	323	37	11.5	3	29	93	122	54	10	6	4	0
Nebraska	356	53	14.9	1	70	85	111	44	13	9	11	11
Nevada	514	40	7.8	1	66	154	189	62	9	10	5	3
New Hampshire	181	20	11.0	1	23	50	61	36	1	2	4	3
New Jersey	996	133	13.4	1	104	309	326	135	25	32	27	19
New Mexico	494	54	10.9	2	59	148	165	68	14	14	6	5
New York	1,842	209	11.3	1	216	523	637	260	35	51	54	30
North Carolina	2,214	263	11.9	7	263	693	738	312	74	47	32	24
North Dakota	120	11	9.2	2	20	39	34	15	3	2	2	3
Ohio	1,742	201	11.5	6	215	505	598	252	41	50	34	26
Oklahoma	978	106	10.8	8	115	299	339	131	33	23	13	11
Oregon	584	79	13.5	1	72	151	199	93	17	23	11	11
Pennsylvania	2,159	266	12.3	4	272	615	717	332	52	55	50	33
Rhode Island	78	5	6.4	1	15	23	20	13	2	2	1	0
South Carolina	1,395	136	9.7	6	163	429	477	226	31	27	12	7
South Dakota	172	26	15.1	3	20	44	61	24	7	8	4	1
Tennessee	1,639	185	11.3	13	219	454	565	247	42	37	28	15
Texas	4,555	380	8.3	16	561	1,502	1,549	562	78	89	43	47
Utah	372	29	7.8	2	53	111	124	61	5	5	2	6
Vermont	85	18	21.2	0	12	24	25	8	9	4	2	1
Virginia	1,345	150	11.2	5	162	432	432	192	39	33	28	13
Washington	784	74	9.4	4	104	249	266	111	10	8	16	13
West Virginia	544	74	13.6	1	59	170	184	81	16	15	7	9
Wisconsin	1,001	108	10.8	6	138	298	333	141	18	27	19	15
Wyoming	177	15	8.5	2	19	53	56	35	3	3	3	3
U.S. Total*	55,681	5,880	10.6	239	6,851	16,948	18,844	7,694	1,342	1,228	912	715
Puerto Rico	613	38	6.2	3	89	242	155	62	12	3	7	2

*Includes 908 drivers of unknown age.

Table 5
Fatalities in Traffic Crashes by State and Age Group, 2007

State	Total	Total 65+	Percentage of Total	Age Group (Years)								
				<16	16-20	21-34	35-54	55-69	70-74	75-79	80-84	85+
Alabama	1,110	148	13.3	42	163	309	333	145	46	31	17	21
Alaska	84	7	8.3	6	12	20	29	10	3	0	1	2
Arizona	1,066	147	13.8	68	131	305	307	134	35	29	27	27
Arkansas	650	91	14.0	31	93	164	188	109	15	20	13	15
California	3,974	560	14.1	235	461	1,197	1,155	487	131	97	94	114
Colorado	554	73	13.2	37	55	156	171	78	14	15	10	18
Connecticut	277	46	16.6	8	42	71	87	34	5	8	12	10
Delaware	117	11	9.4	6	15	36	38	12	5	1	1	3
District of Columbia	44	7	15.9	3	3	16	11	4	4	1	1	1
Florida	3,214	471	14.7	138	390	895	1,003	393	95	97	102	85
Georgia	1,641	202	12.3	75	226	474	481	226	49	37	42	24
Hawaii	138	24	17.4	5	8	48	38	23	3	3	5	5
Idaho	252	47	18.7	25	30	71	60	31	8	10	11	6
Illinois	1,249	177	14.2	66	192	343	346	159	34	42	34	32
Indiana	898	144	16.0	48	121	214	274	129	30	37	23	21
Iowa	445	80	18.0	40	52	100	132	56	7	20	21	16
Kansas	416	62	14.9	27	55	98	123	64	15	15	7	12
Kentucky	864	132	15.3	33	100	228	277	129	28	30	20	19
Louisiana	985	90	9.1	51	125	306	318	121	26	17	7	10
Maine	183	31	16.9	2	28	47	53	28	5	7	6	7
Maryland	614	59	9.6	28	82	187	199	73	14	12	12	7
Massachusetts	417	66	15.8	7	68	118	119	50	16	16	8	13
Michigan	1,088	205	18.8	57	154	246	302	153	47	52	42	35
Minnesota	504	102	20.2	20	55	125	139	87	27	20	17	14
Mississippi	884	112	12.7	54	116	240	276	109	23	27	16	23
Missouri	992	156	15.7	49	148	228	303	140	35	30	22	37
Montana	277	33	11.9	10	34	68	101	46	6	5	5	2
Nebraska	256	51	19.9	16	50	55	67	25	10	11	10	12
Nevada	373	54	14.5	15	47	91	121	58	11	10	11	7
New Hampshire	129	21	16.3	8	15	32	37	24	3	3	2	5
New Jersey	724	143	19.8	38	85	179	206	99	29	28	32	25
New Mexico	413	50	12.1	24	52	123	122	54	6	12	9	6
New York	1,333	265	19.9	47	158	314	383	195	50	59	63	46
North Carolina	1,675	237	14.1	63	205	498	503	216	63	49	40	33
North Dakota	111	10	9.0	6	19	41	24	13	2	1	2	3
Ohio	1,257	188	15.0	52	156	357	371	173	28	46	39	34
Oklahoma	754	95	12.6	46	97	209	222	106	24	23	13	14
Oregon	455	91	20.0	16	59	112	136	61	22	23	11	15
Pennsylvania	1,491	260	17.4	50	231	388	406	209	41	54	64	48
Rhode Island	69	10	14.5	4	14	22	13	8	1	4	2	1
South Carolina	1,066	108	10.1	52	137	316	355	128	32	20	11	9
South Dakota	146	24	16.4	8	17	37	44	20	3	9	4	4
Tennessee	1,210	180	14.9	53	167	305	375	180	44	35	28	22
Texas	3,363	393	11.7	195	413	974	1,047	405	79	85	70	65
Utah	299	34	11.4	22	46	80	80	39	6	2	5	11
Vermont	66	20	30.3	2	6	21	12	7	9	4	3	2
Virginia	1,027	157	15.3	45	136	310	280	129	37	32	28	26
Washington	568	76	13.4	28	83	173	150	79	8	11	19	17
West Virginia	431	64	14.8	16	53	123	139	52	15	14	8	10
Wisconsin	756	107	14.2	36	113	213	213	99	17	30	20	15
Wyoming	150	11	7.3	9	20	43	43	26	2	3	1	3
U.S. Total*	41,059	5,932	14.4	2,022	5,338	11,326	12,212	5,435	1,268	1,247	1,071	1,012
Puerto Rico	452	63	13.9	17	55	155	98	52	23	12	8	10

*Includes 128 fatalities of unknown age.