



# TRAFFIC SAFETY FACTS

## 2011 Data

DOT HS 811 745

April 2013

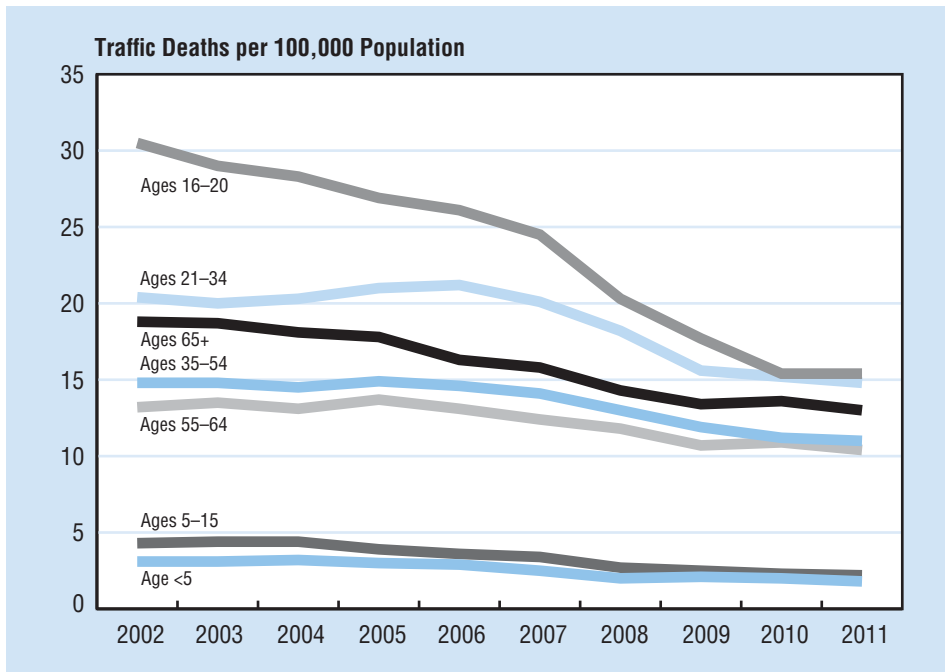
## Older Population

This fact sheet focuses on the older population in the United States, defined as people age 65 and older. In 2011, 13 percent of the total U.S. resident population (41.4 million people) were age 65 and older.

In 2011, 5,401 people age 65 and older were killed and 185,000 were injured in motor vehicle traffic crashes. These older individuals made up 17 percent of all traffic fatalities and 8 percent of all people injured in traffic crashes during the year. Compared to 2010, fatalities among people age 65 and older and injured persons in this age group decreased by 2 percent.

*In 2011, 17 percent of all traffic fatalities in the United States were among people age 65 and older.*

Figure 1  
**Motor Vehicle Traffic Fatality Rates by Age Group, 2002–2011**



Based on Figure 1 above, the older population fatality rate steadily declined from 18.8 in 2002 to 13.0 in 2011.

Table 1  
**Involvement of the Older Population in Traffic Fatalities by Gender, 2002 and 2011**

	2002			2011			Percentage Change, 2002–2011	
	Total	Age 65+	Percentage of Total	Total	Age 65+	Percentage of Total	Total	Age 65+
<b>Population (Thousands)</b>								
Total	287,625	35,522	12.4	311,592	41,394	13.3	8	17
Male	141,231	14,764	10.5	153,291	17,943	11.7	9	22
Female	146,395	20,758	14.2	158,301	23,451	14.8	8	13
<b>Drivers Involved in Fatal Crashes</b>								
Total*	58,113	6,323	10.9	43,668	5,469	12.5	-25	-14
Male	42,377	4,340	10.2	31,806	3,769	11.8	-25	-13
Female	14,999	1,982	13.2	11,209	1,700	15.2	-25	-14
<b>Driver Fatalities</b>								
Total*	26,659	3,984	14.9	20,753	3,402	16.4	-22	-15
Male	19,859	2,704	13.6	15,868	2,316	14.6	-20	-14
Female	6,799	1,279	18.8	4,881	1,086	22.2	-28	-15
<b>Total Traffic Fatalities</b>								
Total*	43,005	6,680	15.5	32,367	5,401	16.7	-25	-19
Male	29,466	3,840	13.0	22,860	3,261	14.3	-22	-15
Female	13,529	2,838	21.0	9,499	2,140	22.5	-30	-25
<b>Occupant Fatalities</b>								
Total*	37,375	5,541	14.8	27,060	4,417	16.3	-28	-20
Male	25,491	3,154	12.4	19,053	2,617	13.7	-25	-17
Female	11,875	2,386	20.1	8,000	1,800	22.5	-33	-25
<b>Pedestrian Fatalities</b>								
Total*	4,851	1,064	21.9	4,432	845	19.1	-9	-21
Male	3,298	619	18.8	3,086	522	16.9	-6	-16
Female	1,552	444	28.6	1,345	323	24.0	-13	-27
<b>Passenger Vehicle Occupant Fatalities</b>								
Total*	32,843	5,314	16.2	21,253	3,970	18.7	-35	-25
Male	21,431	2,959	13.8	13,811	2,208	16.0	-36	-25
Female	11,403	2,354	20.6	7,435	1,762	23.7	-35	-25
<b>Motorcyclist Fatalities</b>								
Total	3,270	96	2.9	4,612	301	6.5	41	214
Male	2,961	89	3.0	4,181	285	6.8	41	220
Female	309	7	2.3	431	16	3.7	39	129
<b>Pedalcyclist Fatalities</b>								
Total	665	56	8.4	677	90	13.3	2	61
Male	592	53	9.0	578	82	14.2	-2	55
Female	73	3	4.1	99	8	8.1	36	167

\*Total includes unknown gender.

*Older drivers made up 16 percent of all licensed drivers in 2011, compared with 15 percent in 2002.*

Among the 65-and-older age group, from 2002 to 2011, the total population increased by 17 percent (males increased by 22% and females increased by 13%). However, as seen in Table 1, driver fatalities for this age group declined by 15 percent (decreased for males by 14% and for females by 15%; see Table 1).

### Drivers

There were 35 million licensed older drivers in 2011—a 21-percent increase from 2002. In contrast, the total number of licensed drivers increased by only 9 percent from 2002 to 2011. Older drivers made up 16 percent of all licensed drivers in 2011, compared with 15 percent in 2002.

As shown in Table 2, of all drivers, older drivers involved in fatal crashes had the lowest proportion of drivers with a blood alcohol concentration (BAC) of .08 grams per deciliter (g/dL) or higher.

Table 2  
**Age and Alcohol of Drivers Involved in Fatal Crashes, 2011**

Age Group (Years)	Drivers Involved in Fatal Crashes		
	Total	BAC= .08+	
		Number	Percent of Total
<16	115	9	8
16–20	4,292	846	20
21–34	12,982	3,999	31
35–54	14,551	3,262	22
55–64	5,542	767	14
65+	5,469	348	6
<b>Total</b>	<b>*43,668</b>	<b>9,296</b>	<b>21</b>

\*Includes 717 drivers of unknown age.

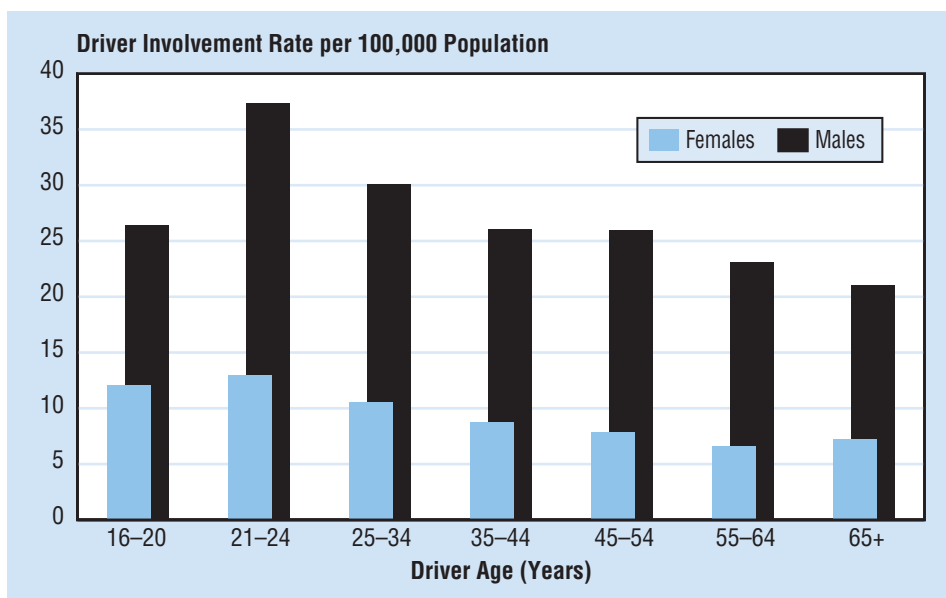
Table 3  
**Fatalities in Crashes Involving Drivers Age 65 and Older, 2002–2011**

Year	2002	2003	2004	2005	2006	2007	2008	2009	2010	2011
Fatalities	6,663	6,805	6,585	6,647	6,334	6,169	5,825	5,613	5,782	5,619

Sixteen percent fewer people were killed in crashes involving an older driver from 6,663 in 2002 to 5,619 in 2011. Since 2010, the number of people killed in crashes involving an older driver decreased by 3 percent (see Table 3).

Most traffic fatalities involving older drivers in 2011 occurred during the daytime (77%), occurred on weekdays (71%), and involved other vehicles (67%).

Figure 2  
**Driver Involvement Rates in Fatal Crashes by Age and Gender, 2011**



*Fatalities in crashes involving older drivers declined by 16 percent from 2002 to 2011.*

*For older pedestrians, 69 percent of fatalities in 2011 occurred at non-intersection locations.*

## Pedestrians

For older people, 69 percent of pedestrian fatalities in 2011 occurred at non-intersection locations. For other pedestrians, 83 percent of fatalities occurred at non-intersection locations.

Among all fatally injured adult pedestrians, older pedestrians had the lowest proportion of pedestrians with a BAC of .08 g/dL or higher.

Table 4

**Pedestrian Fatalities by Age Group and BAC, 2011**

Age Group (Years)	Total	BAC= .08+	
		Number	Percent of Total
<16	264	5	2
16–20	252	62	25
21–34	930	462	50
35–54	1,460	695	48
55–64	656	232	35
65+	845	92	11
<b>Total</b>	<b>*4,432</b>	<b>1,559</b>	<b>35</b>

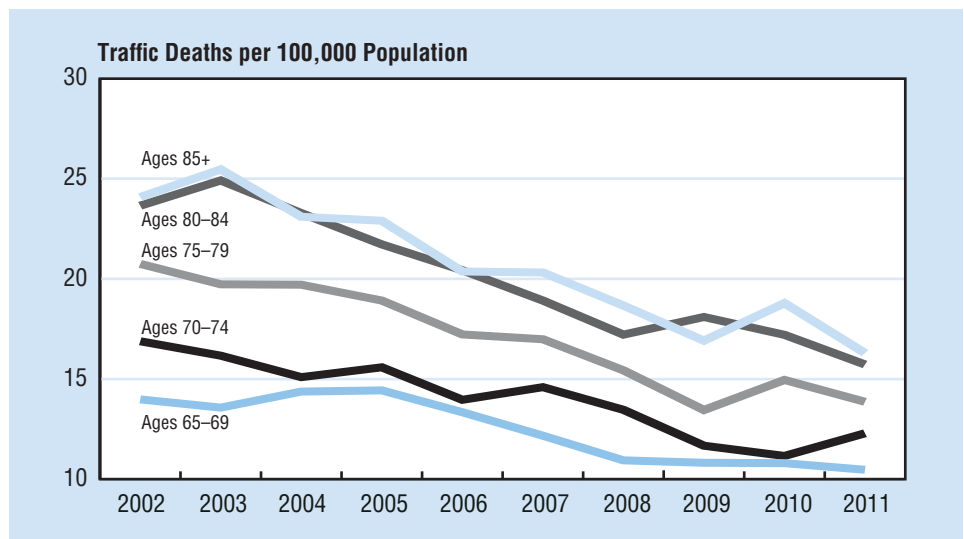
\*Includes 25 pedestrian fatalities of unknown age.

## Older Population Age Groups

In 2011, among the older population, the fatality rate for the 85+ age group was 16.30 per 100,000 population, which was higher than any other older age group.

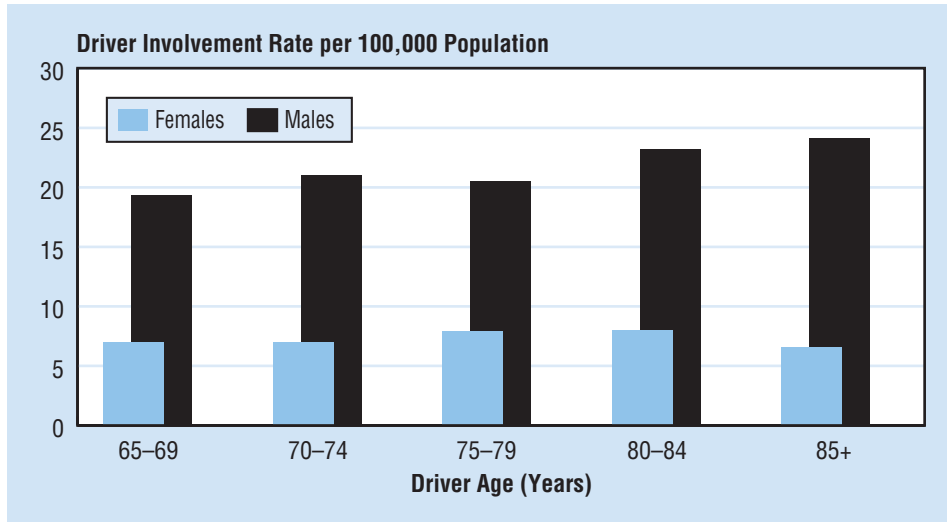
Figure 3

**Motor Vehicle Traffic Fatality Rates Among Older Population by Age Group, 2002–2011**



In 2011, fatal crash driver involvement rates per 100,000 population among older male drivers was highest (24.18) in the 85-and-older age group; and among older female drivers was highest in the 80-84 age group (8.01).

Figure 4  
**Involvement Rates for Older Drivers in Fatal Crashes by Age Group and Gender, 2011**



Driver involvement in fatal traffic crashes by State, driver ages, and fatalities in those crashes can be found in Tables 5 and 6.

### For more information:

Information on traffic fatalities is available from the National Center for Statistics and Analysis (NCSA), NVS-424, 1200 New Jersey Avenue SE., Washington, DC 20590. NCSA can be contacted at 800-934-8517 or via the following e-mail address: [ncsaweb@dot.gov](mailto:ncsaweb@dot.gov). General information on highway traffic safety can be accessed by Internet users at [www.nhtsa.gov/NCSA](http://www.nhtsa.gov/NCSA). To report a safety-related problem or to inquire about motor vehicle safety information, contact the Vehicle Safety Hotline at 888-327-4236.

Other fact sheets available from the National Center for Statistics and Analysis are *Alcohol*, *African American*, *Bicyclists and Other Cyclists*, *Children*, *Hispanic*, *Large Trucks*, *Motorcycles*, *Occupant Protection*, *Overview*, *Pedestrians*, *Race and Ethnicity*, *Rural/Urban Comparisons*, *School Transportation-Related Crashes*, *Speeding*, *State Alcohol Estimates*, *State Traffic Data*, and *Young Drivers*. Detailed data on motor vehicle traffic crashes are published annually in *Traffic Safety Facts: A Compilation of Motor Vehicle Crash Data from the Fatality Analysis Reporting System and the General Estimates System*. The fact sheets and annual Traffic Safety Facts report can be accessed online at [www-nrd.nhtsa.dot.gov/CATS/index.aspx](http://www-nrd.nhtsa.dot.gov/CATS/index.aspx).



U.S. Department  
of Transportation  
**National Highway  
Traffic Safety  
Administration**

Table 5

**Driver Involvement in Fatal Traffic Crashes by State and Age Group, 2011**

State	Total*	Age 65+	Percentage of Total	Age Group (Years)								
				<16	16-20	21-34	35-54	55-69	70-74	75-79	80-84	85+
Alabama	1,209	142	11.7	3	133	345	444	179	30	32	20	15
Alaska	91	9	9.9	0	10	34	26	16	2	1	1	0
Arizona	1,092	147	13.5	2	114	308	333	201	27	26	21	17
Arkansas	732	87	11.9	5	63	229	242	117	24	10	20	10
California	3,749	385	10.3	6	315	1,221	1,211	604	99	49	63	45
Colorado	587	59	10.1	0	63	185	186	108	16	10	5	9
Connecticut	291	38	13.1	2	22	96	101	34	5	7	8	11
Delaware	141	21	14.9	0	13	38	47	27	3	6	4	1
Dist of Columbia	29	1	3.4	0	3	11	11	0	1	0	0	0
Florida	3,281	439	13.4	7	287	966	1,109	511	110	91	58	69
Georgia	1,684	247	14.7	9	156	436	582	325	56	37	33	21
Hawaii	140	16	11.4	0	12	54	39	18	4	4	2	2
Idaho	214	31	14.5	0	34	61	54	44	7	6	3	4
Illinois	1,246	152	12.2	5	121	379	418	198	34	23	29	18
Indiana	1,042	143	13.7	1	99	279	359	182	37	26	20	24
Iowa	473	90	19.0	2	51	118	153	79	18	18	17	15
Kansas	541	76	14.0	3	60	164	165	96	12	11	14	12
Kentucky	999	116	11.6	1	85	302	357	163	29	31	13	12
Louisiana	930	82	8.8	2	92	318	317	128	19	21	11	6
Maine	169	26	15.4	2	22	35	53	44	4	1	6	2
Maryland	686	80	11.7	0	63	230	207	113	17	17	13	9
Massachusetts	454	61	13.4	0	47	131	159	61	21	8	10	12
Michigan	1,227	176	14.3	4	148	346	379	195	39	29	29	29
Minnesota	503	87	17.3	4	52	136	145	108	14	16	9	18
Mississippi	807	79	9.8	3	83	249	280	135	22	18	5	11
Missouri	990	118	11.9	4	129	282	320	167	25	26	15	14
Montana	262	36	13.7	1	23	70	85	57	8	8	4	5
Nebraska	257	34	13.2	1	26	62	87	53	7	4	4	11
Nevada	328	46	14.0	1	25	104	107	64	8	8	5	4
New Hampshire	120	22	18.3	0	10	29	46	20	5	5	2	3
New Jersey	872	126	14.4	2	79	249	293	134	35	21	21	21
New Mexico	419	45	10.7	3	37	127	149	74	13	3	5	5
New York	1,530	197	12.9	1	126	440	513	264	36	37	38	32
North Carolina	1,670	208	12.5	5	171	500	578	254	46	39	31	25
North Dakota	187	26	13.9	3	19	59	64	24	7	8	1	2
Ohio	1,431	195	13.6	3	157	375	504	228	48	45	37	19
Oklahoma	900	124	13.8	3	99	259	308	130	31	25	19	17
Oregon	434	74	17.1	0	35	114	136	97	15	16	13	6
Pennsylvania	1,771	241	13.6	1	199	514	581	277	55	52	48	31
Rhode Island	82	14	17.1	0	4	32	30	4	4	3	4	1
South Carolina	1,086	122	11.2	3	104	330	389	167	39	21	8	12
South Dakota	136	20	14.7	2	14	41	40	24	5	4	3	3
Tennessee	1,332	180	13.5	5	137	389	452	219	48	33	23	16
Texas	4,128	383	9.3	7	414	1,361	1,378	616	96	63	60	42
Utah	336	38	11.3	2	36	108	94	70	9	1	6	6
Vermont	66	12	18.2	0	7	12	25	15	3	1	0	3
Virginia	1,007	135	13.4	0	90	287	342	180	41	22	18	19
Washington	596	83	13.9	1	60	173	179	127	16	7	9	17
West Virginia	463	68	14.7	0	49	129	150	83	17	14	9	8
Wisconsin	785	118	15.0	6	77	216	262	138	20	25	20	18
Wyoming	163	14	8.6	0	17	49	62	24	6	2	2	0
<b>U.S. Total</b>	<b>43,668</b>	<b>5,469</b>	<b>12.5</b>	<b>115</b>	<b>4,292</b>	<b>12,982</b>	<b>14,551</b>	<b>7,196</b>	<b>1,293</b>	<b>991</b>	<b>819</b>	<b>712</b>
Puerto Rico	482	38	7.9	0	46	171	145	72	9	10	4	2

\*Includes drivers of unknown age. The United States had 717 drivers of unknown age.

Table 6  
**Fatalities in Traffic Crashes by State and Age Group, 2011**

State	Total*	Age 65+	Percentage of Total	Age Group (Years)								
				<16	16-20	21-34	35-54	55-69	70-74	75-79	80-84	85+
Alabama	894	135	15.1	49	102	233	282	127	30	28	21	19
Alaska	72	9	12.5	7	6	20	20	15	0	1	1	2
Arizona	825	140	17.0	39	78	210	227	171	22	32	25	20
Arkansas	549	77	14.0	22	49	153	170	94	21	8	18	14
California	2,791	462	16.6	104	266	800	813	456	107	81	73	85
Colorado	447	60	13.4	17	44	121	134	85	14	14	6	12
Connecticut	220	33	15.0	8	23	79	56	28	6	7	4	9
Delaware	99	17	17.2	5	8	23	38	10	3	8	3	1
Dist of Columbia	27	4	14.8	0	6	10	5	5	0	0	0	0
Florida	2,398	438	18.3	84	214	597	764	404	100	89	61	83
Georgia	1,223	199	16.3	62	115	302	366	241	39	29	34	27
Hawaii	100	22	22.0	2	14	30	22	16	3	3	5	5
Idaho	167	27	16.2	9	34	40	33	35	5	5	2	4
Illinois	918	169	18.4	43	96	239	277	142	34	29	32	26
Indiana	750	122	16.3	37	82	191	224	119	27	22	22	26
Iowa	360	96	26.7	15	48	80	88	46	18	23	20	21
Kansas	386	67	17.4	18	40	118	103	60	8	11	11	17
Kentucky	721	128	17.8	22	62	203	223	117	30	32	17	14
Louisiana	675	74	11.0	29	72	219	205	96	15	16	13	10
Maine	136	25	18.4	5	18	36	31	30	3	2	6	5
Maryland	485	79	16.3	19	60	146	128	65	17	16	16	14
Massachusetts	337	77	22.8	4	41	91	78	54	20	13	14	17
Michigan	889	160	18.0	27	109	232	255	139	35	29	35	28
Minnesota	368	76	20.7	13	44	95	84	75	12	16	10	19
Mississippi	630	82	13.0	42	66	175	181	106	22	19	6	13
Missouri	784	116	14.8	45	108	208	210	125	24	27	20	17
Montana	209	31	14.8	7	20	58	60	40	6	5	7	6
Nebraska	181	32	17.7	4	27	42	48	38	4	4	4	9
Nevada	246	44	17.9	10	18	66	70	52	8	4	9	8
New Hampshire	90	20	22.2	2	8	27	28	10	3	5	3	4
New Jersey	627	123	19.6	24	52	170	177	103	28	25	20	28
New Mexico	353	44	12.5	24	31	103	109	51	14	8	4	6
New York	1,169	247	21.1	34	99	300	327	205	43	46	54	50
North Carolina	1,227	189	15.4	50	142	342	378	173	43	35	39	24
North Dakota	148	21	14.2	11	13	50	39	19	7	6	1	2
Ohio	1,016	186	18.3	42	131	246	300	148	45	37	34	33
Oklahoma	696	118	17.0	38	69	185	216	103	25	23	17	20
Oregon	331	66	19.9	14	30	81	90	64	14	16	15	7
Pennsylvania	1,286	238	18.5	35	156	353	351	201	56	36	47	51
Rhode Island	66	17	25.8	1	5	19	22	6	3	3	6	1
South Carolina	828	110	13.3	38	87	213	279	129	33	20	12	15
South Dakota	111	21	18.9	3	12	32	28	22	4	4	3	3
Tennessee	946	158	16.7	39	96	248	296	151	40	31	23	22
Texas	3,016	378	12.5	133	336	921	864	479	86	74	66	50
Utah	240	36	15.0	25	22	69	55	45	9	2	4	9
Vermont	55	11	20.0	2	11	7	16	11	3	1	1	3
Virginia	764	124	16.2	29	80	211	218	126	36	23	21	20
Washington	457	88	19.3	13	44	125	110	106	16	13	9	19
West Virginia	337	62	18.4	10	42	82	99	57	18	13	6	10
Wisconsin	582	122	21.0	20	55	141	163	108	15	28	25	27
Wyoming	135	21	15.6	6	19	37	40	17	8	3	5	0
<b>U.S. Total</b>	<b>32,367</b>	<b>5,401</b>	<b>16.7</b>	<b>1,341</b>	<b>3,410</b>	<b>8,779</b>	<b>9,400</b>	<b>5,325</b>	<b>1,182</b>	<b>1,025</b>	<b>910</b>	<b>935</b>
Puerto Rico	359	57	15.9	13	41	90	92	58	9	17	12	5

\*Total includes fatalities of unknown age. The United States had 60 fatalities of unknown age.