

Fatalities in the United States

NHTSA's
National Center for
Statistics and Analysis

HS 812 349

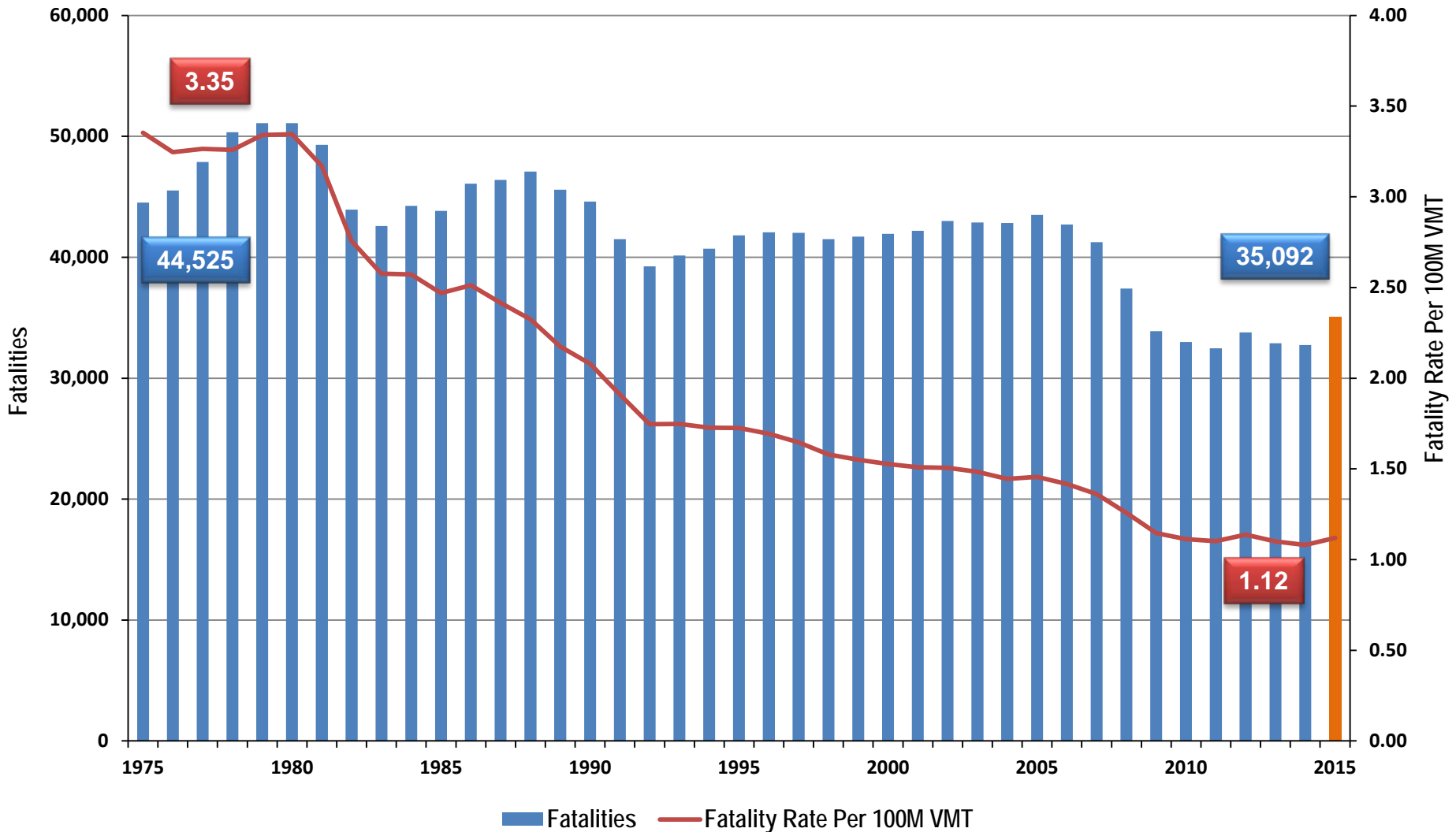
September 16, 2016

NHTSA
NATIONAL HIGHWAY TRAFFIC SAFETY ADMINISTRATION





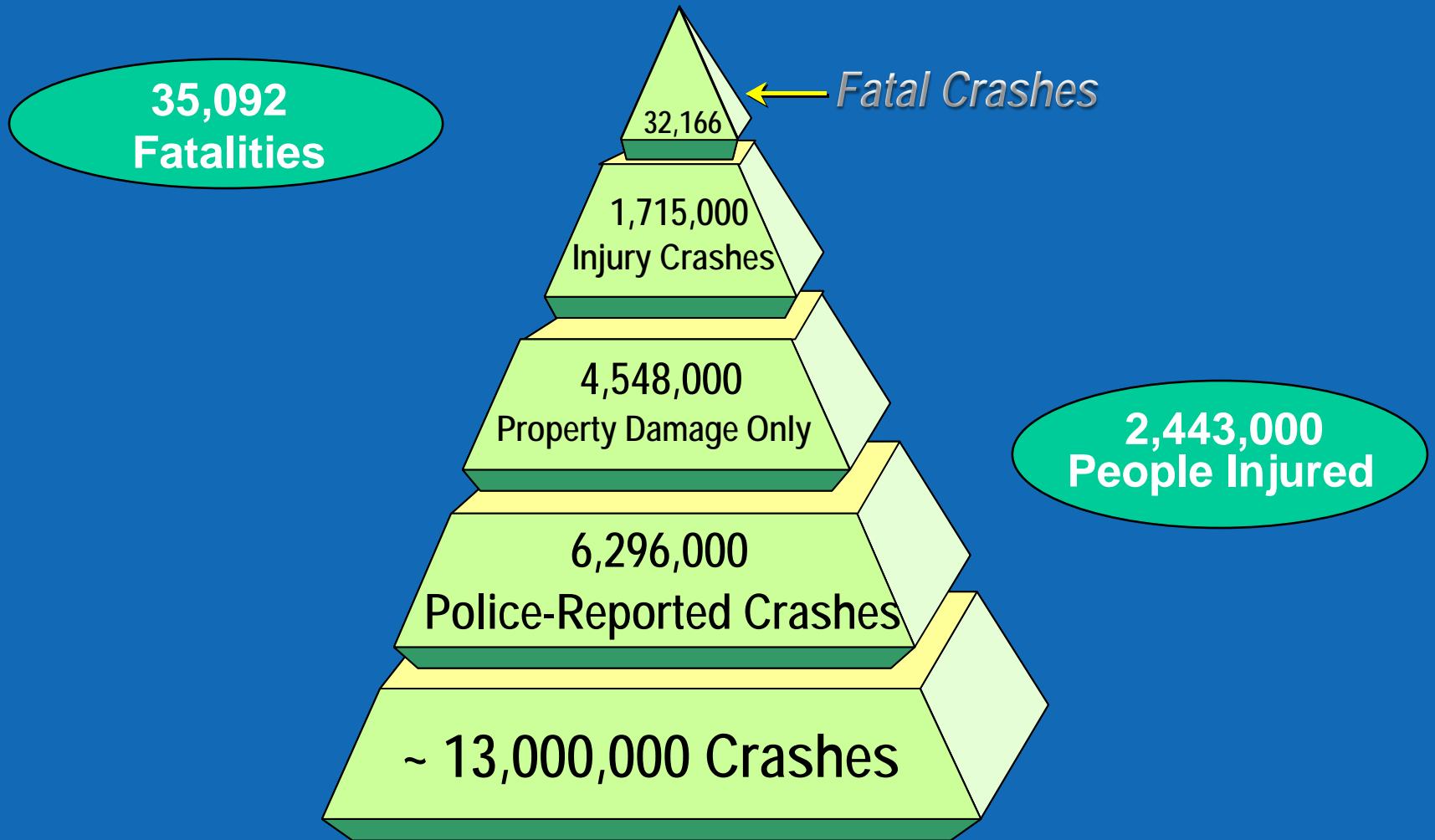
Fatalities and Fatality Rates, 1975-2015



Source: FARS, FHWA



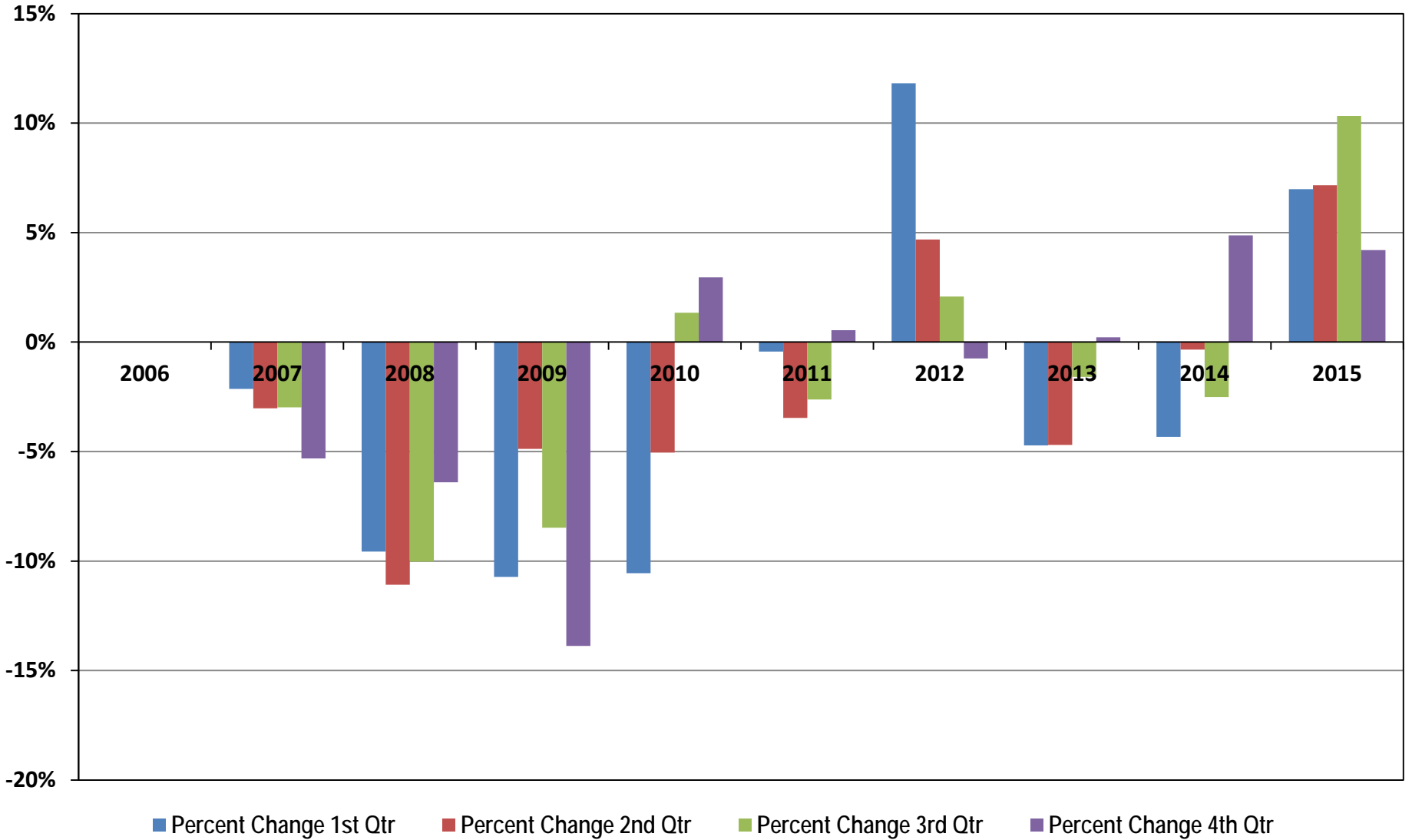
Crashes by Crash Severity, 2015



Economic Cost: \$242B; Societal Harm: \$836B



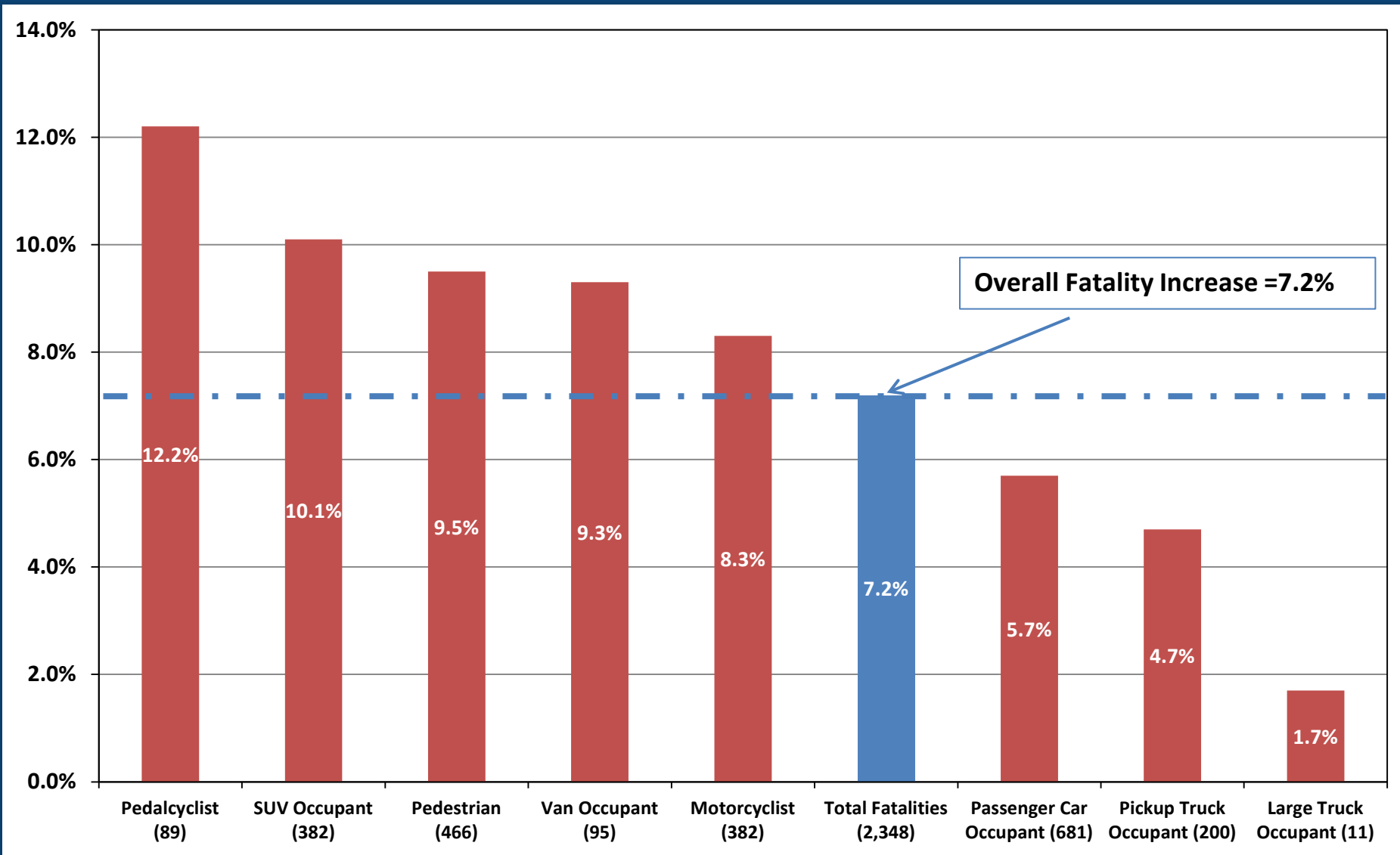
Percent Change in Fatalities By Same Quarter From Previous Year, 2006-2015



Source: FARS



Percent Change in Fatalities by Occupant/Nonoccupant, 2014-2015 (Actual Change in Parentheses)



Source: FARS

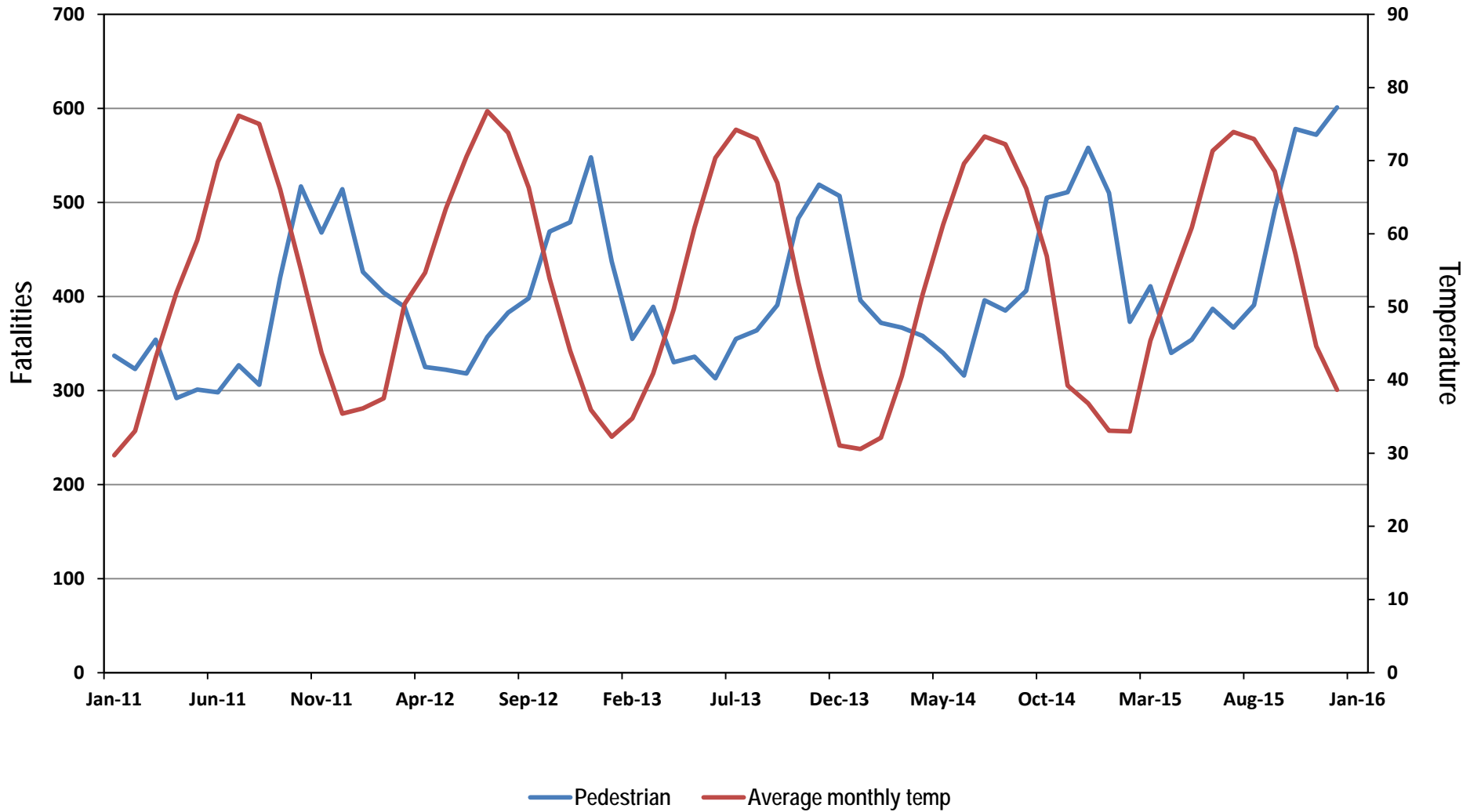


Pedestrian Fatality Facts, 2015

- Pedestrian fatalities increased by 9.5%
 - Highest fatalities since 1996
- Notable crash characteristics:
 - 76% of pedestrian fatalities were in urban areas
 - 72% occurred at non-intersections
 - 74% occurred in the dark
- Notable fatality characteristics:
 - 70% of pedestrians killed were male
 - Age group with the highest number of fatalities: 50-54 years old
 - 38% of pedestrians (16+ years old) killed had .08+ BACs



Average Monthly Temperature and Pedestrian Fatalities, 2011-2015



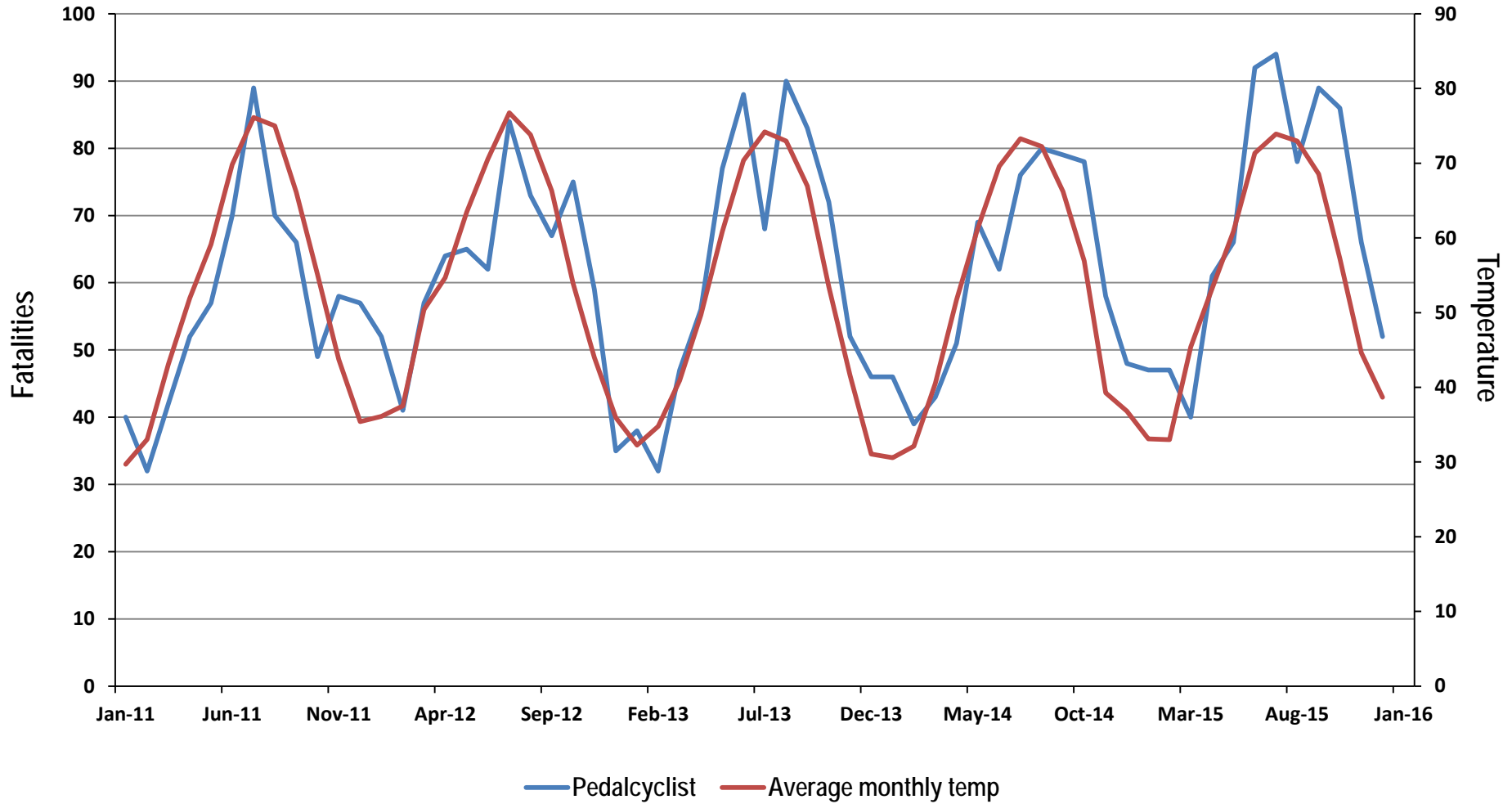


Pedalcyclist Fatality Facts, 2015

- Pedalcyclist fatalities increased by 12.2%
 - Highest fatalities since 1995
- Crash characteristics
 - 70% occurred in urban areas
 - 61% occurred at non-intersections
 - 47% occurred in the daylight and in the dark
- Fatality characteristics
 - Average age of pedalcyclists killed was 45 (steady increase from 41 years old in 2006)
 - 85% of those killed were male
 - 22% of those killed had BACs of .08+

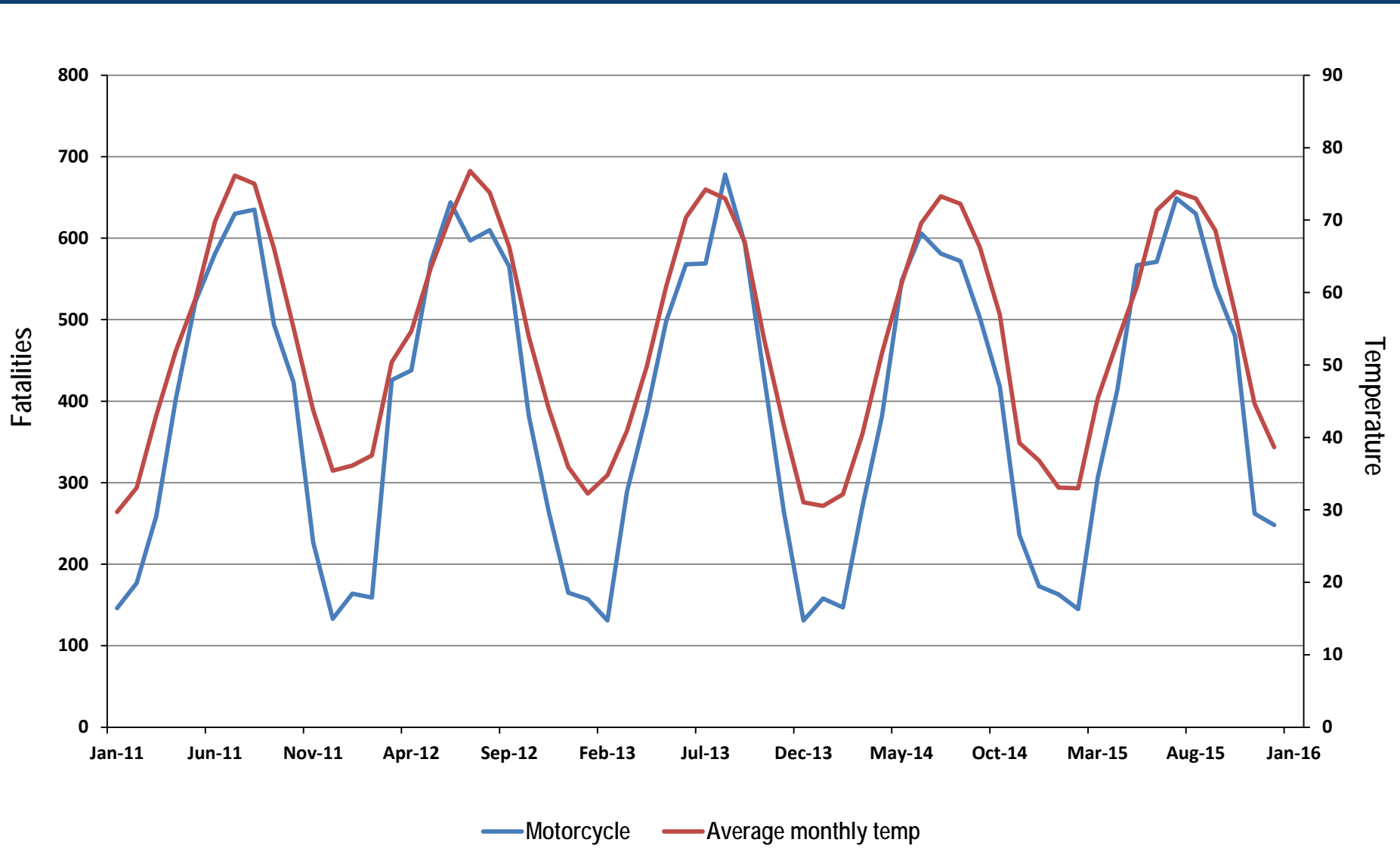


Average Monthly Temperature and Pedalcyclist Fatalities, 2011-2015



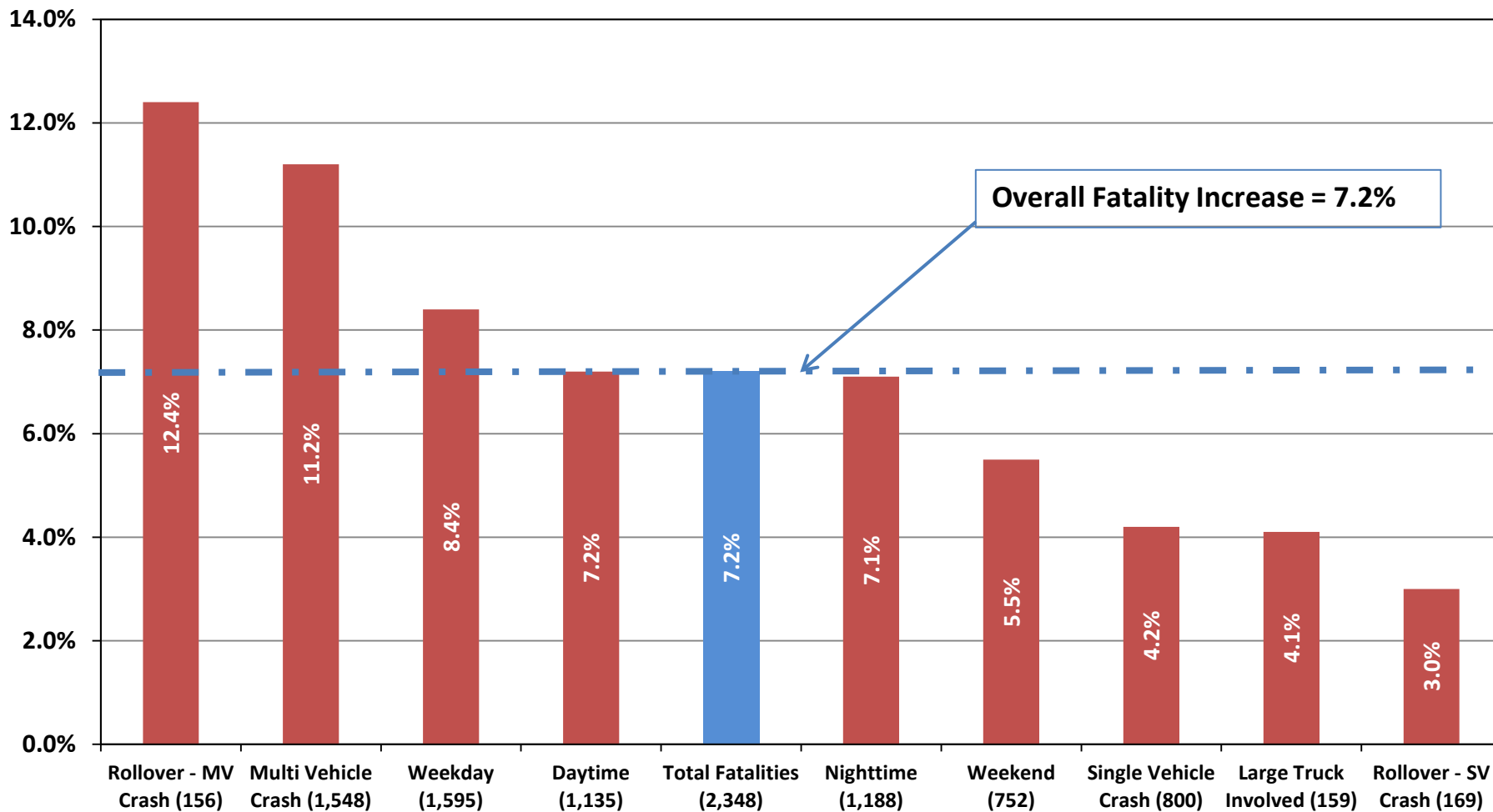


Average Monthly Temperature and Motorcyclist Fatalities, 2011-2015





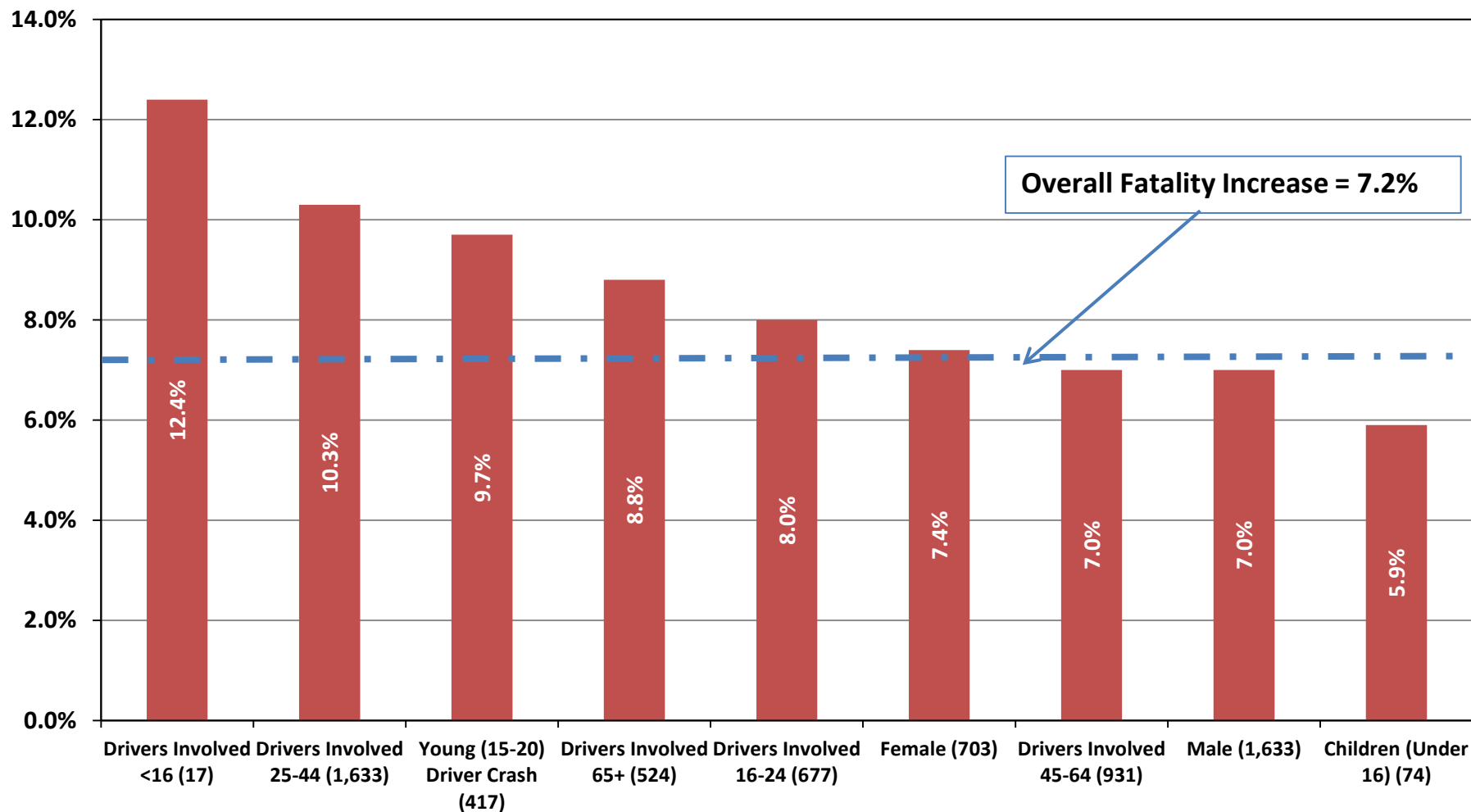
Percent Change by Crash Category, 2014-2015 (Not Mutually Exclusive; Actual Change in Parentheses)



Source: FARS



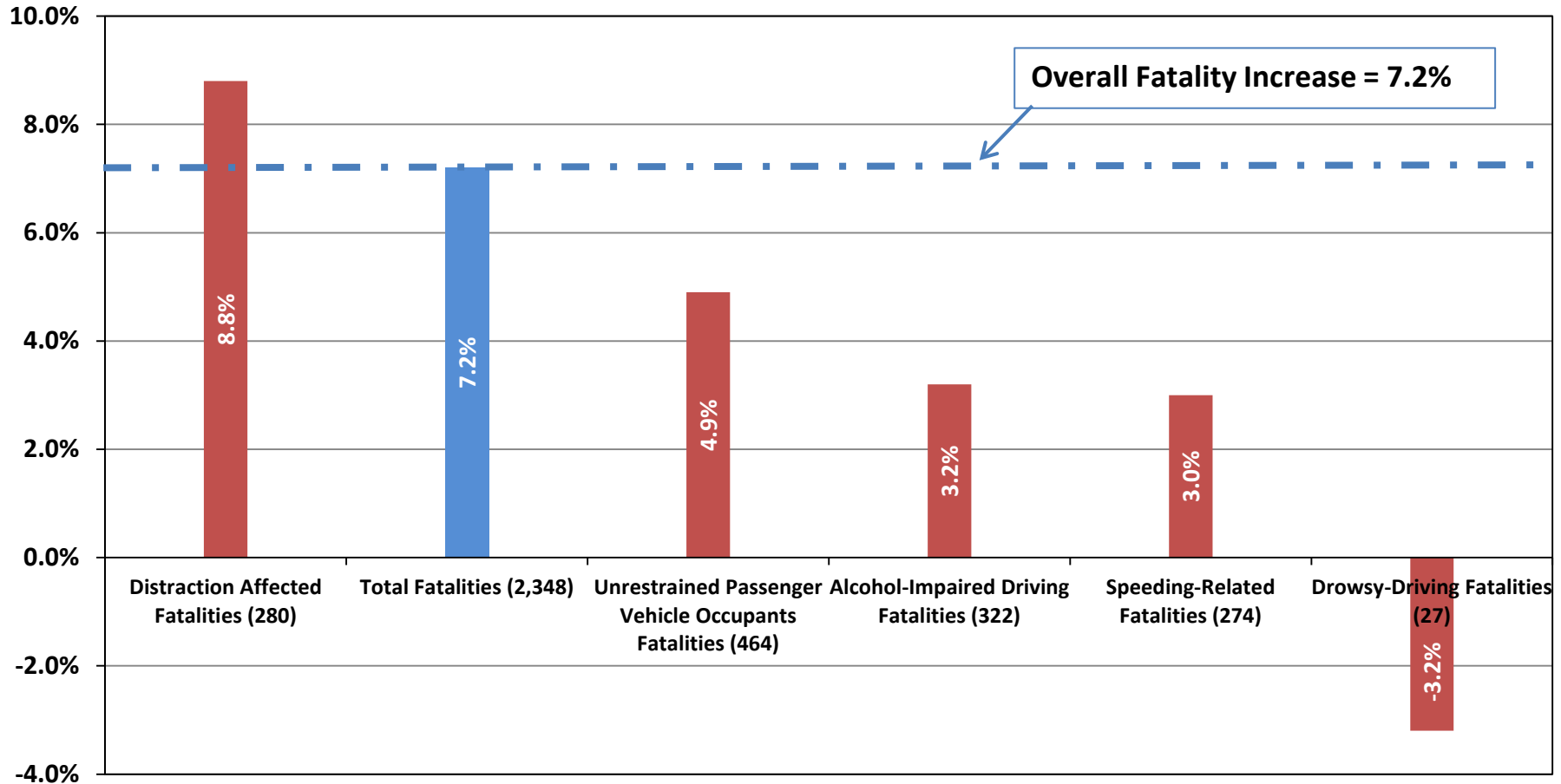
Percent Change by Person Category, 2014-2015 (Not Mutually Exclusive; Actual Change in Parenthesis)



Source: FARS



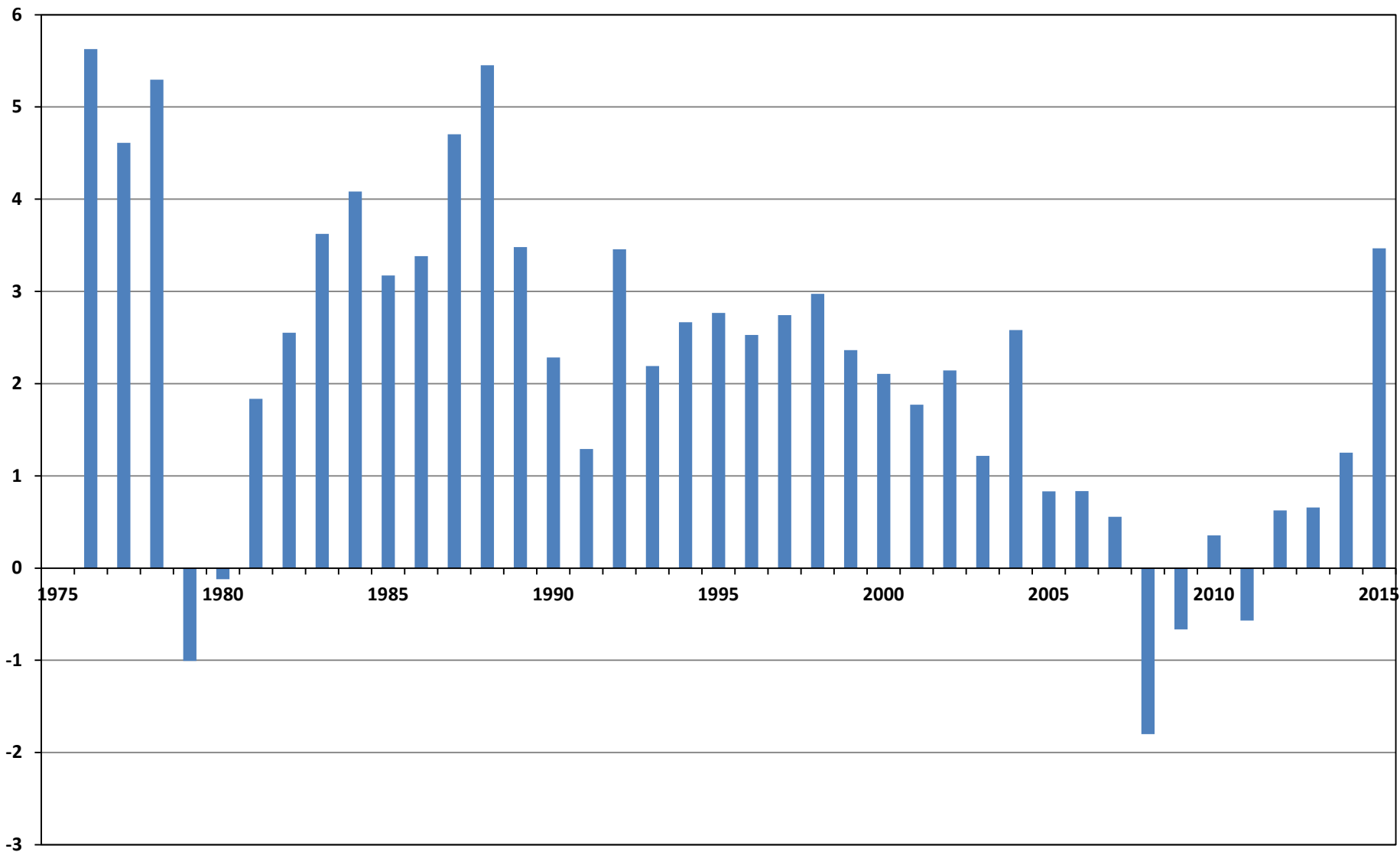
Percent Change by Human Choice Category, 2014-2015 (Not Mutually Exclusive; Actual Change in Parentheses)



Source: FARS



Annual Percentage Change in 100M Vehicle Miles Traveled (VMT), 1975-2015





Composition of Motor Vehicle Traffic Fatalities, 2006 and 2015

	<u>2006</u>	<u>2015</u>
Passenger car occupants	42%	36%
Light-truck occupants	30%	28%
Pedestrians, bicyclists, and other nonoccupants	13%	18%
Motorcyclists	11%	14%
Large trucks, buses and other vehicle occupants	3%	4%

Source: FARS

